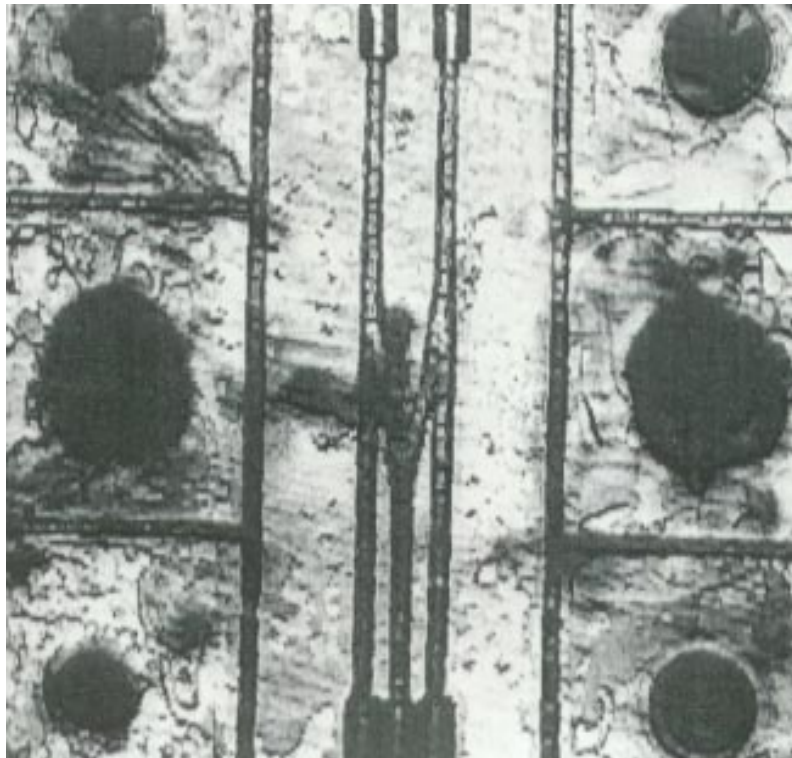




acoustic microscopy

Splice in a fibre-optic distributor

Nowadays light signals are often used for switching electronic assemblies. The light is then mostly transmitted by fibre-optic light guides. If you wish to trigger two different receivers with one signal source you will splice into one. For durability reasons the distributor is cladded with aluminium lammellae. With the help of acoustic microscopy the splice can be imaged non-destructively to check its quality.



Frequency 60 MHz, Image width: 30 mm, Thickness of aluminium lamella: 2mm